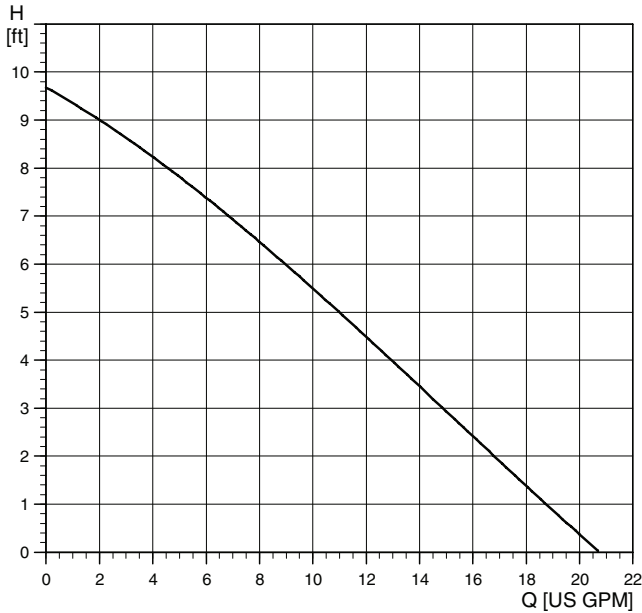


Technical data

UP Series
UP 15-29SU/SF



TM03 8847 2607

Flow range: 0-20.5 U.S. gpm
 Head range: 0-9.7 feet
 Motors: 2-pole, single-phase
 Max. liquid temperature: 230 °F (110 °C) and 150 °F for UP 15-29SU/TLC
 Min. liquid temperature: 36 °F (2 °C)
 Max. system pressure: 145 psi
 Open system

Note: If the UP pump is equipped with a timer, the maximum liquid temperature is 150 °F (66 °C).

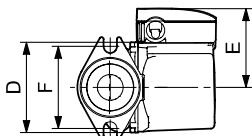
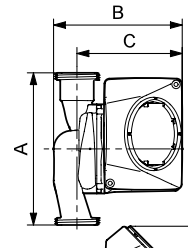
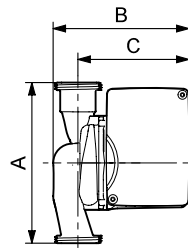
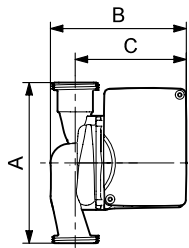
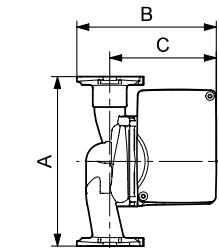
Model	Volts	Amps	Watts	Hp	Capacitor
UP 15-29SF	115	0.75	87	0.12	10µF/180 V
UP 15-29SUC		0.75	87	0.12	10µF/180 V
UP 15-29SU	230	0.42	97	0.15	2µF/400 V

UP 15-29SF

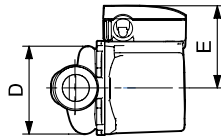
UP 15-29SU

UP 15-29SU/LC

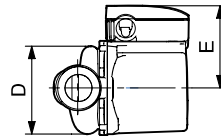
UP 15-29SU/TLC



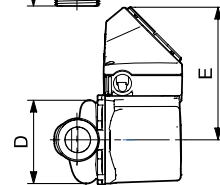
TM03 8776 2507



TM03 8777 2507



TM03 8777 2507



TM03 8778 250

Model type	Product number		A	B	C	D	E	F	Connection type and size	Shipping weight [lbs]
	115 V	230 V								
UP 15-29SF	59896771	-	6 8/16	5 8/16	4 2/16	3 14/16	2 15/16	3 2/16	GF15/26	6
UP 15-29SU	59896775	59896784	5 14/16	5 8/16	4 2/16	3 7/16	2 15/16	-	GU125	5.4
UP 15-29SU/LC	59896776	-	5 14/16	5 8/16	4 2/16	3 7/16	2 15/16	-	GU125	5.7
UP 15-29SUC/TLC	59896777	-	5 14/16	5 8/16	4 2/16	3 7/16	2 15/16	-	GU125	6.2

Note: The UP 15-29SUC/TLC model has a removable check valve.
 LC/TLC Models have 6-foot 3-prong power cord.