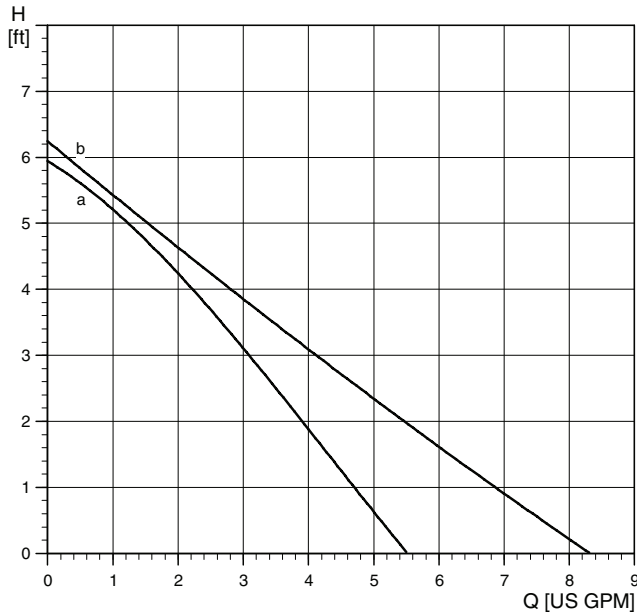


## UP 15



TM03 8424 1507

Flow range: 0-8.2 U.S. gpm  
 Head range: 0-6.2 feet  
 Motors: 2-pole, single-phase  
 Max. liquid temperature: 220 °F (104 °C)  
 Min. liquid temperature: 36 °F (2 °C)  
 Max. system pressure: 145 psi

**Note:** If the UP pump is equipped with a timer, the maximum liquid temperature is 150 °F (66 °C).

Model	Volts	Amps	Watts	Hp	Capacitor
UP 15-10B5 and B7	115	0.22	25	1/25	2µF/400 V

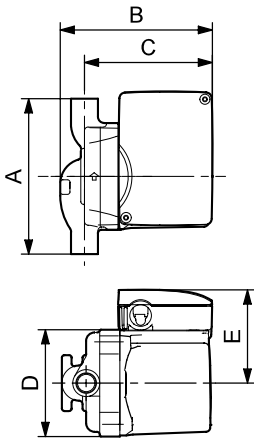
Position	System type	Description
a	Open	UP 15-10B5
b	Open	UP 15-10B7

UP 15-10B5 and UP 15-10B5/LC

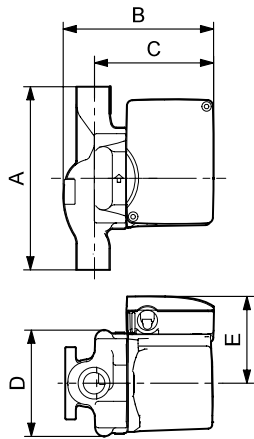
UP 15-10B7 and UP 15-10B7/LC

UP 15-10B5/TLC

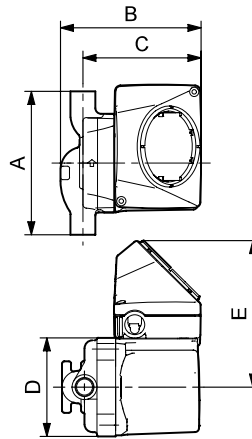
UP 15-10B7/TLC



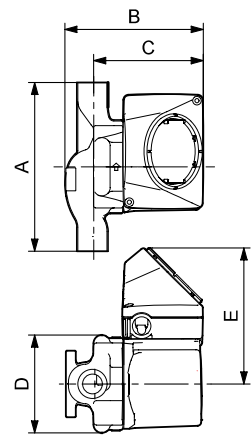
TM03 8545 1907



TM03 8547 1907



TM03 8546 1907



TM03 8548 1907

Model type	Product number	A	B	C	D	E	F	Connection type and size	Shipping weight [lbs]
UP 15-10B5	59896213	5	4 11/16	4	4	3 1/2	-	1/2" sweat	6
UP 15-10B5/LC	59896214	5	6 3/16	5 1/2	4	3 1/2	4	1/2" sweat	6.5
UP 15-10B5/TLC	59896215	5	6 3/16	5 1/2	4	3 1/2	4	1/2" sweat	6.5
UP 15-10B7	59896226	6 3/8	5 1/8	4	3 13/16	3 1/4	-	3/4" sweat	6.7
UP 15-10B7/LC	59896209	6 3/8	6 5/8	5 1/2	3 13/16	3 1/4	4	3/4" sweat	7.5
UP 15-10B7/TLC	59896210	6 3/8	6 5/8	5 1/2	3 13/16	3 1/4	4	3/4" sweat	7.5

**Note:** LC/TLC models have a 6-foot 3-prong power cord.