

ITT

Residential & Commercial Water Systems

Goulds Pumps

AquaBoost II

5AB2 Variable Speed Constant Pressure Pump Controller



5AB2 CONTROLLER FEATURES

Input Power^① — 196-264 Volts, single phase 2 wire, grounded

Output Power — Up to 230V three phase (based on input voltage). Motor rated for 208-230 V.

Maximum Full Load Current — 16.6 Amps^②

Input Controls — Press and hold pressure increase/decrease buttons. Min. speed & motor overload switch.

Signal Light — Power on, pump running, pump stopped, faults/errors.

Electrical Efficiency — Over 95%

Protection Against — Short circuit, under voltage, motor overload, motor temperature, dead heading, run out, suction loss, sensor fault, bound pump, over voltage, over/under temperature.

Ambient Temperature — 0° F to 122° F

Maximum Humidity — 95% at 122° F, non-condensing

Air Pollution — Avoid mounting in areas with excessive dust, acids, corrosives and salts.

Controller Enclosure — NEMA 3R, IP 22 (Rain-tight)

Mounting — Wall mount (mounting screws included).

Cooling — Convection with heat sink and fan.

Transducer — 0.5 - 4.5 VDC with 5 VDC power supply, 100 psi range, 80 inch 3-wire cable. Consult factory for higher ranges.

^① Low input voltage will affect motor operation.

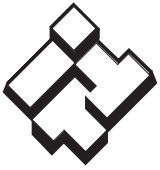
^② Always size 3 phase motor based on max. amps.



Goulds Pumps is a brand of ITT Corporation.

www.goulds.com

Engineered for life



ITT

GOULDS PUMPS Residential & Commercial Water Systems

PRODUCT OVERVIEW

The 5AB2 AquaBoost II pump controller provides an economical answer for municipal and private water systems with low water pressure. Both domestic and light commercial applications can benefit. As water use increases, the AquaBoost II changes pump speed to maintain pressure. Large supply tanks are eliminated and up to 50% of the energy required by a full speed pump is saved.

The 5AB2 is available with a power capacity to handle homes with up to four baths, irrigation, filtration and fire suppression systems. The AquaBoost II is available as a separate variable speed controller.

* Pressure sensor (transducer) and cable is included.

COMPONENTS / PART NUMBERS

5AB2 — 16.6 Amp AquaBoost II controller, wall mount set, transducer, outdoor rated enclosure. (Pump and tank not included.)

PRESSURE RANGE

Nominal Range — Field adjustable from 10 - 100 psi, total system pressure.



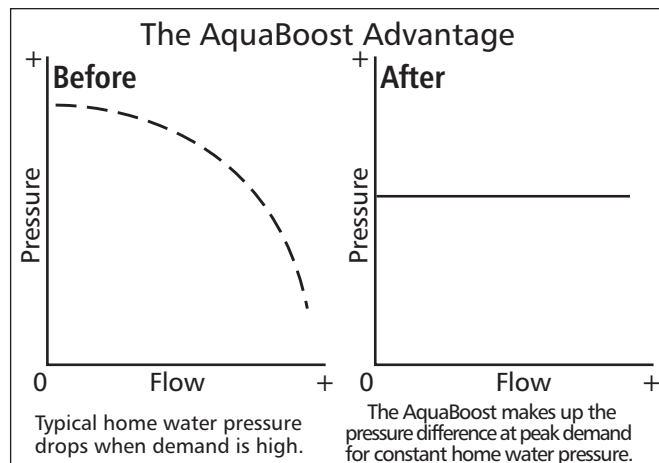
DO NOT SET REQUIRED PRESSURE ABOVE MAX. FIXTURE RATINGS, OR SEVERE DAMAGE TO PLUMBING, PUMPS, TANK OR FIXTURES CAN OCCUR.

AGENCY LISTINGS



Tested to UL 778, 508C and
CSA 22.2 108-M89, 14-95
Standards By Canadian
Standards Association
File #LR38549

Goolds Pumps is ISO 9001 Registered.

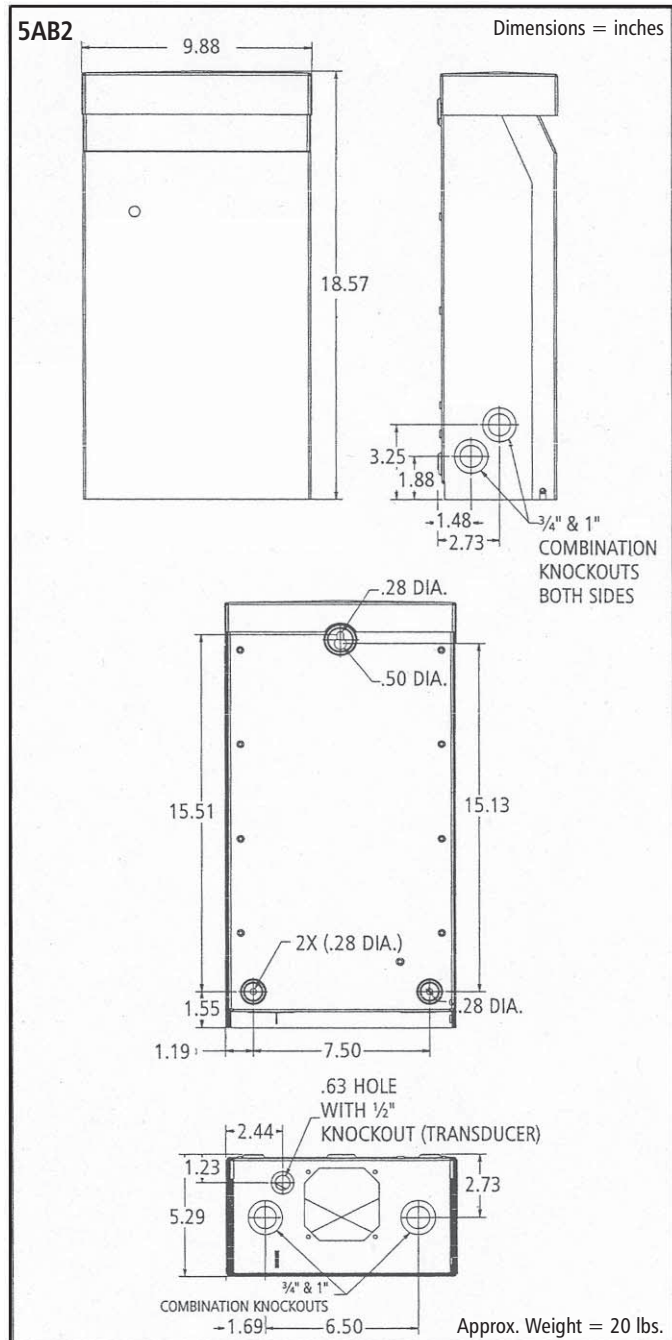




ITT

GOULDS PUMPS Residential & Commercial Water Systems

DIMENSIONS





ITT

Residential & Commercial Water Systems

TYPICAL SYSTEM INSTALLATIONS

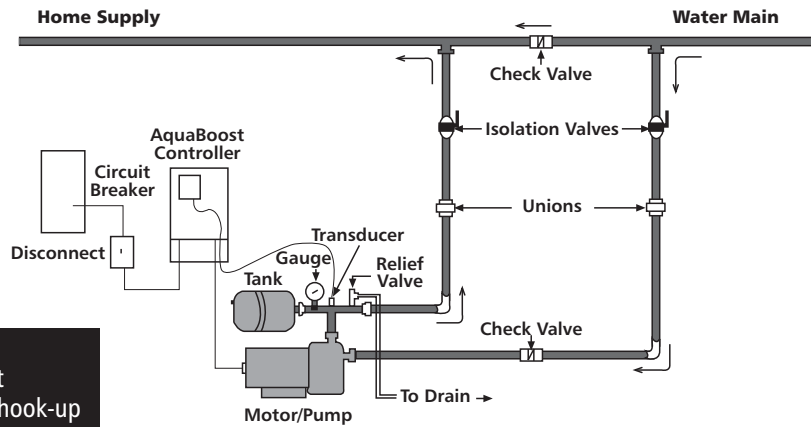


Figure 1
System Layout
for municipal hook-up

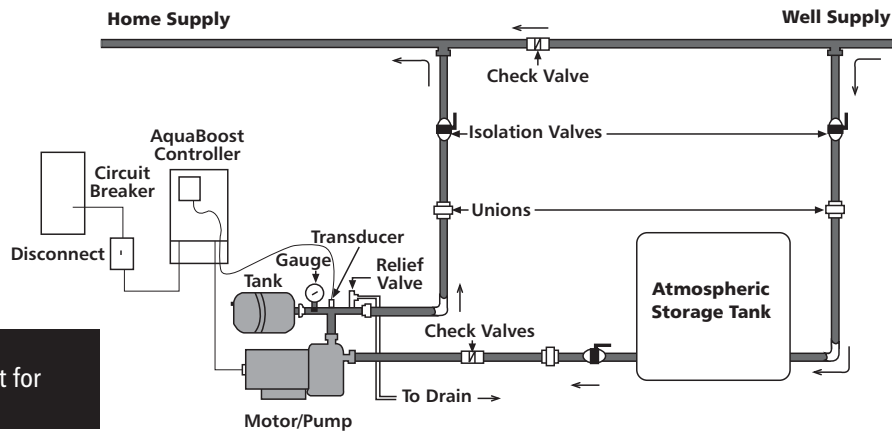


Figure 2
System Layout for
supply tank

Note
Pump and Tank not included with the 5AB2 AquaBoost controller. Typical installation, accessories by qualified plumbers and electricians.



Goulds Pumps, AquaBoost and the ITT Engineered Blocks Symbol are registered trademarks and tradenames of ITT Corporation.

SPECIFICATIONS ARE SUBJECT TO CHANGE WITHOUT NOTICE.

B5AB July, 2007
© 2007 ITT Corporation

Engineered for life