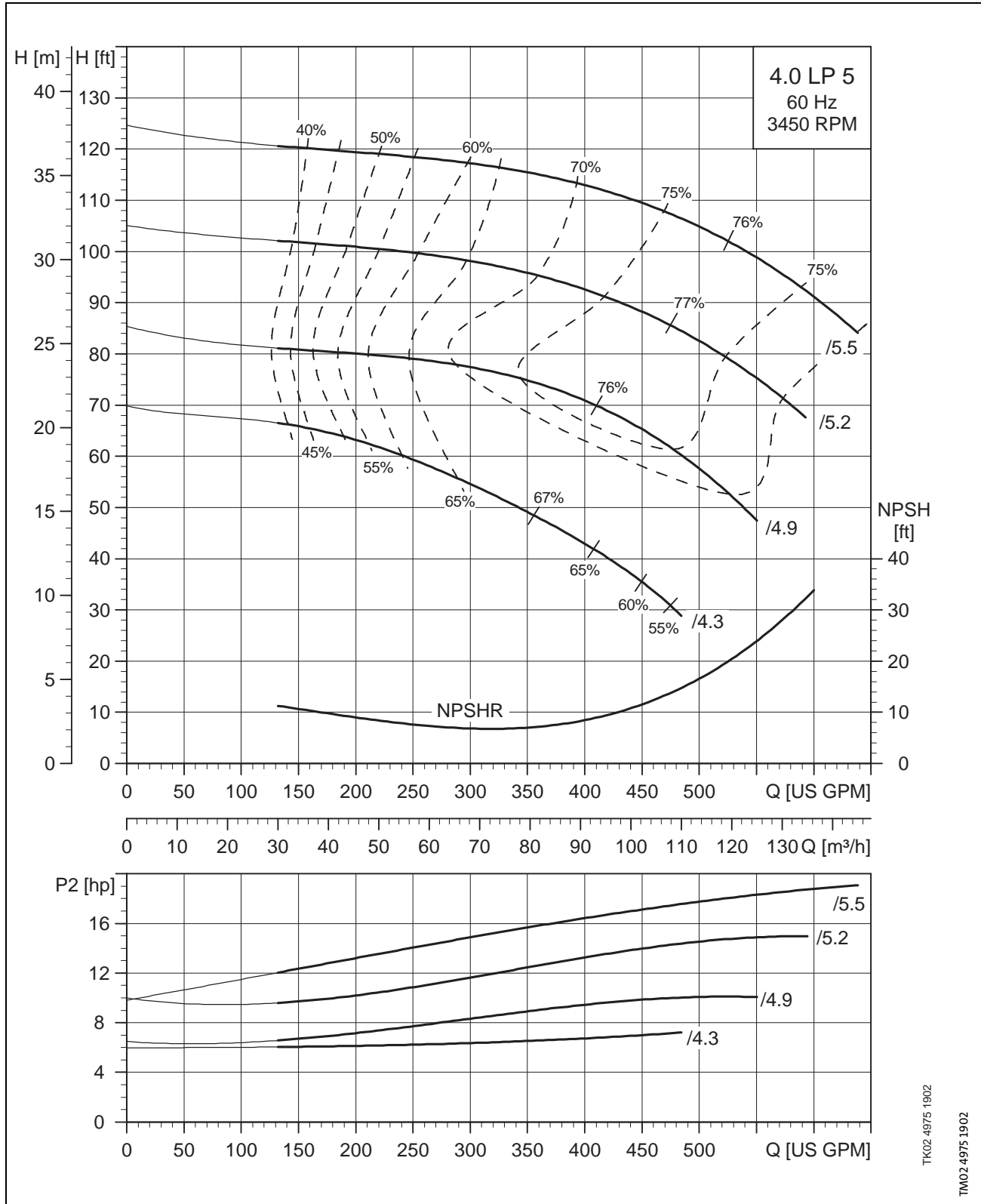
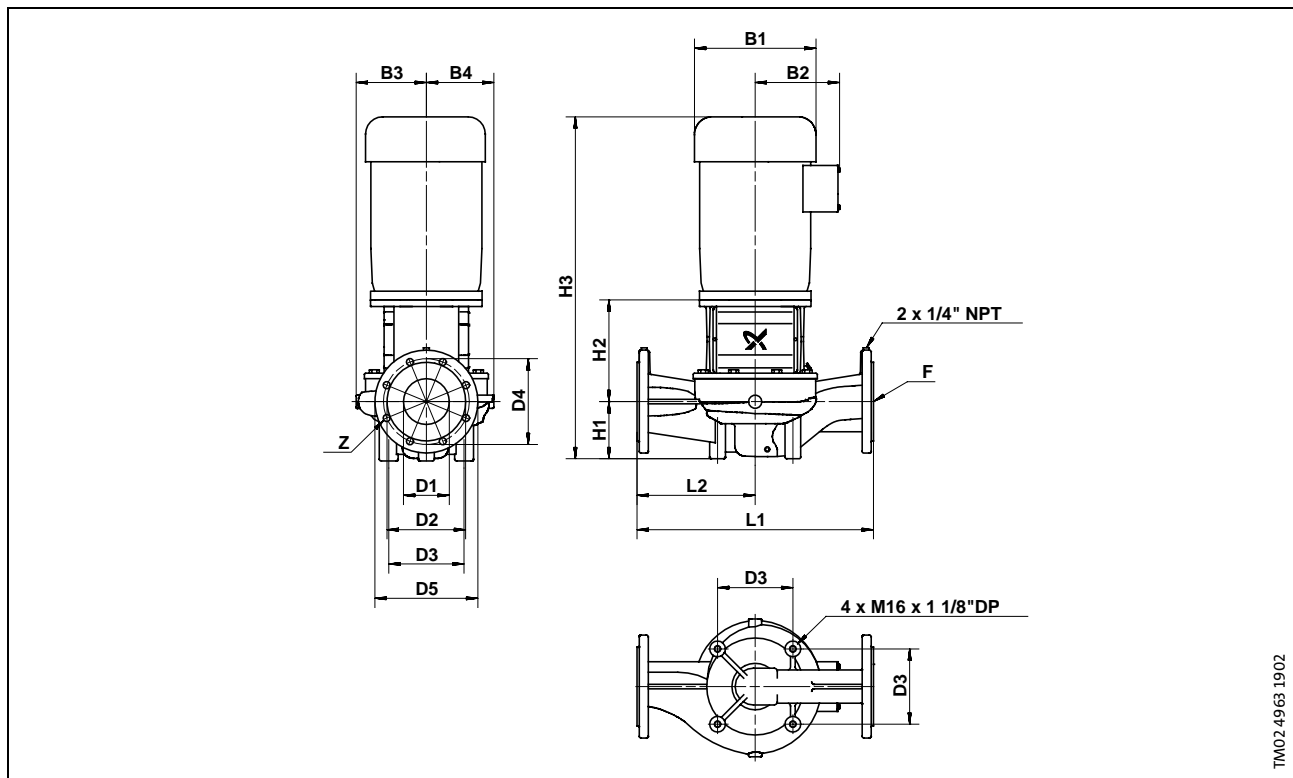


4.0 LP 5/XX



4.0 LP 5/XX



TM02.4963.1902

Electrical Data, Dimensions and Weights

Pump Type	HP	Mtr S.F.	PH	NEMA Frame Size	Volts	Dimensions [Inches] (mm)				Z [Qty.]	Dimensions [inches] (mm)								Net Wt.	
						D1	D3	D4	D5		B1	B2	B3	B4	H1	H2	H3	L1		L2
4.0 LP 5/4.3	7.5	1.15	1	213TC	208-230	4 (102)	6 5/8 (168)	7 1/2 (191)	7 1/2 (191)	8 x 5/8 (16)	10 1/4	7 3/8	6 3/4 (172)	5 9/16 (141)	5 1/8 (130)	9 13/16 (249)	30 1/2	21 (533)	10 1/2 (267)	225
	7.5	1.15	3	215TC	208-230/460,575	4 (102)	6 5/8 (168)	7 1/2 (191)	7 1/2 (191)	8 x 5/8 (16)	8 1/2	5 7/8	6 3/4 (172)	5 9/16 (141)	5 1/8 (130)	9 13/16 (249)	28 7/8	21 (533)	10 1/2 (267)	195
4.0 LP 5/4.9	10	1.15	1	215TC	230	4 (102)	6 5/8 (168)	7 1/2 (191)	7 1/2 (191)	8 x 5/8 (16)	10 1/4	7 3/8	6 3/4 (172)	5 9/16 (141)	5 1/8 (130)	9 13/16 (249)	31 11/16	21 (533)	10 1/2 (267)	227
	10	1.15	3	215TC	208-230/460,575	4 (102)	6 5/8 (168)	7 1/2 (191)	7 1/2 (191)	8 x 5/8 (16)	10 1/4	7 3/8	6 3/4 (172)	5 9/16 (141)	5 1/8 (130)	9 13/16 (249)	30 1/2	21 (533)	10 1/2 (267)	197
4.0 LP 5/5.2	15	1.15	3	254TC	208-230/460,575	4 (102)	6 5/8 (168)	7 1/2 (191)	7 1/2 (191)	8 x 5/8 (16)	10 3/16	7 3/8	6 3/4 (172)	5 9/16 (141)	5 1/8 (130)	9 13/16 (249)	30 1/2	21 (533)	10 1/2 (267)	220
4.0 LP 5/5.5	20	1.15	3	284TSC	230/460,575	4 (102)	6 5/8 (168)	7 1/2 (191)	7 1/2 (191)	8 x 5/8 (16)	11 1/8	8 15/16	6 3/4 (172)	5 9/16 (141)	5 1/8 (130)	9 (230)	38 1/4	21 (533)	10 1/2 (267)	320

Technical Data

Flow Range:	110-620 U.S. GPM	Temperature Range:	5°-250°(-15°-121°C)
Minimum Pumping Rate:	50 U.S. GPM	Maximum Working Pressure:	175 PSI
Head Range:	35-125 FEET	Flanges:	4" ANSI 125 LB. F.F.
Motors:	ODP (STANDARD); TEFC (OPTIONAL)		