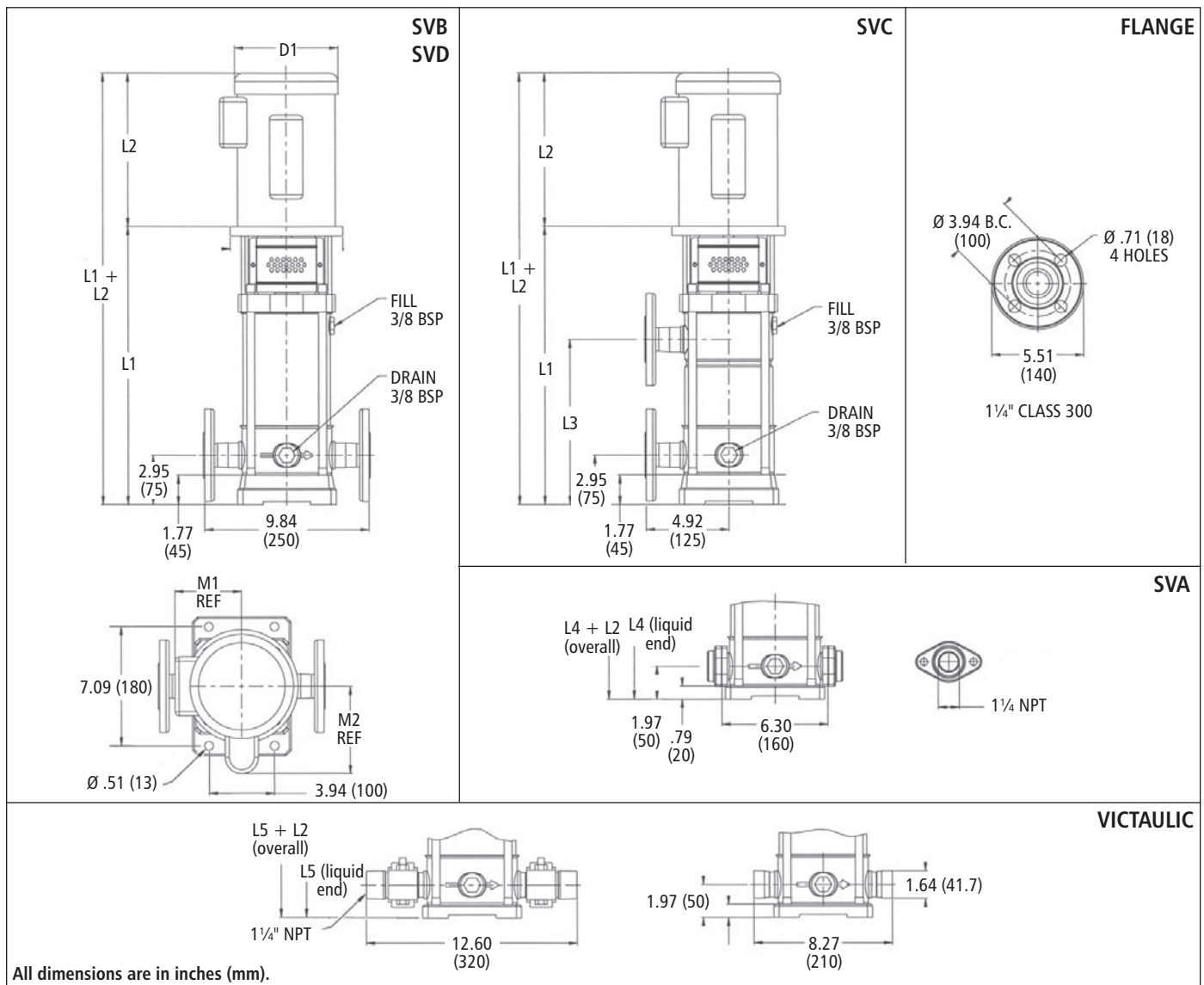


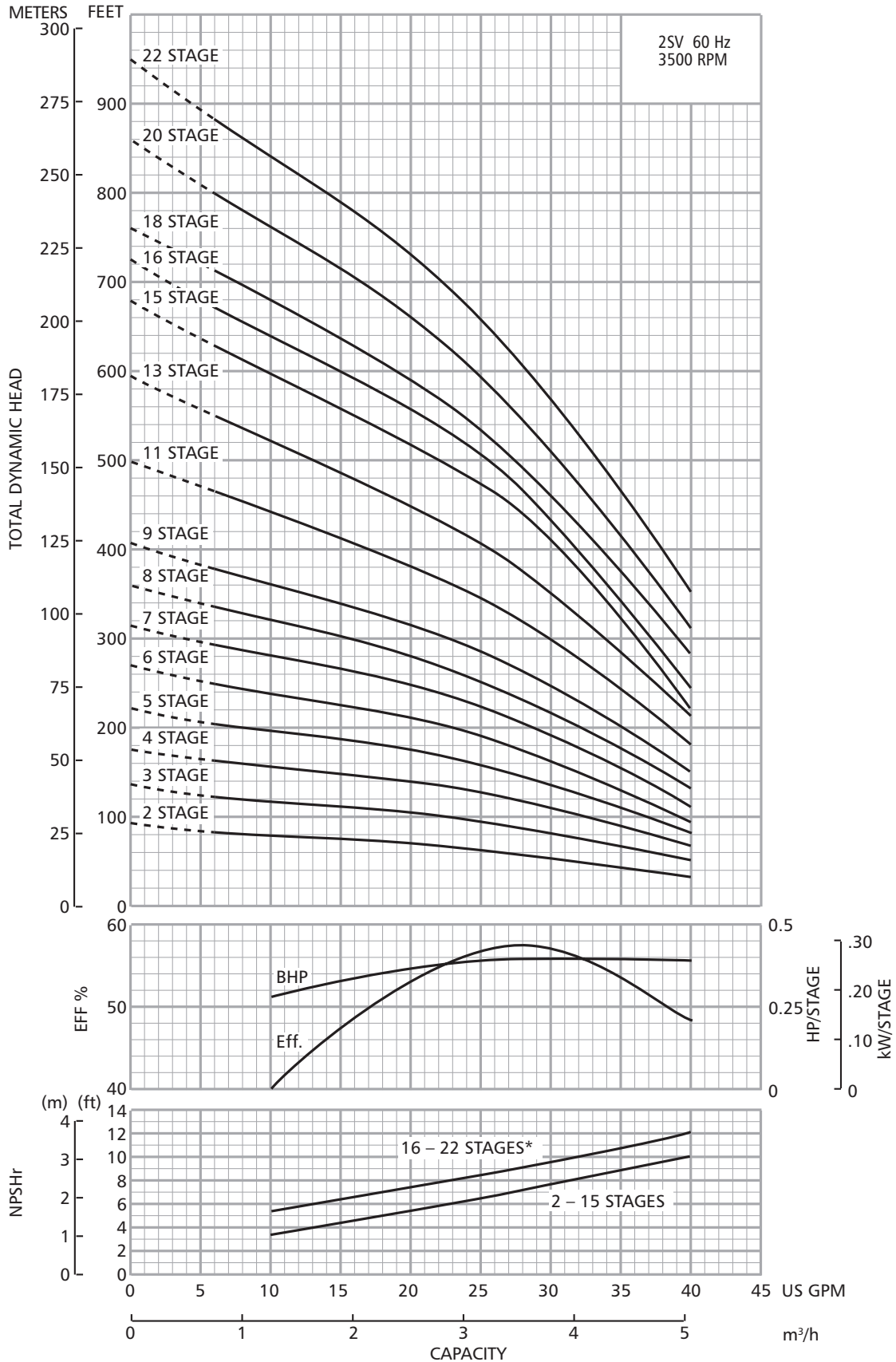
# Dimensions and Weights

## 2SV Series 3500 RPM



Stage	Frame (1-Phase)		Frame (3-Phase)				L2					D1 (max.)		Weights (lb)								
	ODP	TEFC	ODP	TEFC	HP	L1	ODP	TEFC	L3	L4	L5	M1 (ref.)	M2 (ref.)	ODP	TEFC	Liquid End	ODP	TEFC				
2	56C		56C		3/4	12.69	10.75	9.94	11.19	11.69	11.69	5.06	5.19	6.19	6.19	21	24	28				
3					1	13.63	10.63	12.69		12.69	5.75	5.56	22			32	40					
4					1 1/2	14.63	10.69	13.63		13.63			24			40	43					
5					56C		56C		2	15.63	11.19	12.06	8.88	14.63	14.63	5.50	5.56	7.19	7.19	25	43	51
6									16.63	9.88	15.63	15.63	26									
7									17.56	10.81	16.63	16.63	28									
8									18.56	11.81	17.56	17.56	30	51	56							
9									19.56	12.81	18.56	18.56	31									
11					182-4TC		182-4TC		5	21.50	13.94	15.44	14.75	20.56	20.56	6.88	6.63	8.50	8.50	33	75	85
13	23.50	16.75	22.50	35																		
15	25.44	18.69	24.44	39																		
16	26.44	26.44	26.44	40																		
18	184TC		184TC		7 1/2	28.44	13.94	15.44	28.44	28.44	28.44	6.88	6.63	8.50	8.50	42	101	124				
20					30.44	30.44			30.44	44												
22					32.44	32.44			32.44	46												

# 2SV Curve 3500 RPM



\* For vertical shaft installation only.